

# Lean On Me-Bass

NAC Instant Choir

arrangement: Lee Hayes  
© Bill Withers

lee@leehayes.ca

1

HOO HOO OO - OO - OO HOO OO - OO - OO HOO OO - OO HOO HOO HOO OO - OO - OO

6

HOO OO - OO - OO HOO OO - OO HOO OO! LEAN ON ME YEAH! YEAH

10

WHEN YOU'RE NOT STRONG I WILL BE I WILL BE YOUR FRIEND AND I'LL HELP YOU

12

CAR - - - RY ON AND IT WON'T BE LONG FOR

14

IT WON'T BE LONG TIL I WILL NEED SOME-BO - DY TO LEAN ON LIS - TEN TO ME

17

YEAH! SOME - TIMES IN OUR LIVES OH YEAH WE ALL HAVE PAIN UH - HUH WE ALL HAVE

20

SOR - - - ROW LIS - TEN TO ME YEAH! BUT IF WE ARE WISE

22

OH YEAH WE KNOW THAT THERE'S UH - HUH AL - WAYS TO - MOR - ROW LEAN ON ME OH YEAH WE KNOW THAT THERE'S

25

YEAH! YEAH WHEN YOU'RE NOT STRONG I WILL BE I WILL

27



29



32



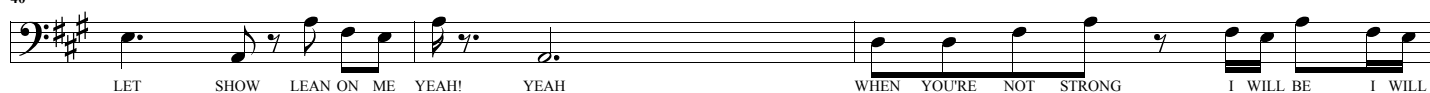
34



37



40



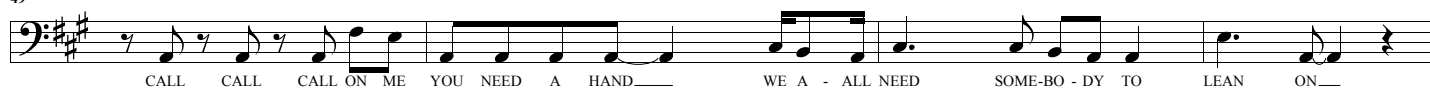
43



45



49



53



56

LEAN ON \_\_\_\_\_ LIS-TEN TO ME YEAH! IF THERE IS A LOAD \_\_\_\_\_ OH YEAH YOU HAVE TO BEAR \_\_\_\_\_

59

\_\_\_\_\_ UH - HUH THAT YOU CAN'T CAR - - RY \_\_\_\_\_ LIS-TEN TO ME YEAH! I'M RIGHT UP THE ROAD \_\_\_\_\_

62

\_\_\_\_\_ OH YEAH I'LL SHARE YOUR LOAD \_\_\_\_\_ UH - HUH IF YOU JUST CALL ME \_\_\_\_\_ CALL CALL CALL ON ME

66

YOU NEED A HAND \_\_\_\_\_ WE A - ALL NEED SOME-BO - DY TO LEAN ON \_\_\_\_\_ MIGHT HAVE A PROB-LEM

70

YOU'LL UN - DER - STAND \_\_\_\_\_ WE A - ALL NEED SOME-BO - DY TO LEAN ON \_\_\_\_\_ WE A - ALL

73

NEED SOME-BO - DY TO LEAN ON \_\_\_\_\_ WE A - ALL NEED SOME-BO - DY TO LEAN TO LEAN TO

77

LEAN ON